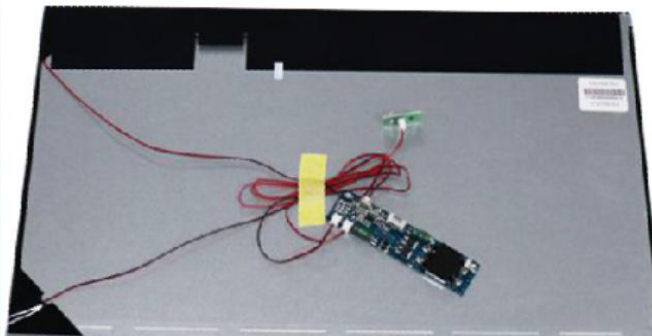


# TDD-TD-190H

## 19" High Brightness TFT Displays



### Overview

Designed especially for outdoor application, the **TDD High Brightness TFT Displays** include **10.1 to 86 inch, Open Frame, Optical Bonding, Solar Powered, Bar Type, Full Array Local Dimming, Ultra & Custom High Brightness Displays** types, ensuring excellent visibility in direct sunlight. Custom backlight solution & advanced brightness sensor allow for automatic adjustments based on ambient light, optimizing readability and energy efficiency, ensuring the clear visibility at all times and extending the lifespan of the displays – making it the ideal solution for the bright environments.

### Features

- 1000 up to 2500 nits, Sunlight Readable, Wide Operating Temperature
- 24/7 IPS Panel with Industrial Grade LED Backlights (analog / PWM Dimming Control)
- Available in Kits Form, Open Frame, Waterproof Optical Bonding Tempered Glass and Fully Custom Design

### Specifications

#### Panel

LCD Type	TFT / <b>IPS</b> / Transmissive / Normally Black
Diagonal Size	19"(4:3), 48.26cm, Active matrix TFT LCD (WLED)
Active Area (mm)	374.78 mm x 299.82 mm
Pixel Pitch (H x V)	0.2928 x 0.2928 mm
Resolution	1280 x 1024
Viewing Angle	Horizontal: 89° or 178° total / Vertical: 89° or 178° (Typ.)(CR≥10)
Number of Colors	16.7 million
Brightness (typical)	<b>1000 nits</b>
Response Time-total	14 (Typ.)(Tr+Td) ms
Contrast Ratio	1000:1
Input Video Frequency	Horizontal: 30 - 60 KHz / Vertical: 50 - 75 Hz
Interface	LVDS 30 pins
Supply Voltage	5V (Typ.)

**PCAP Touch Panel** **None**

#### LCD Controller (A/D) Board

Video Interfaces	<b>Default:</b> 1*VGA, 1*HDMI for 1K, 2*HDMI for 4K; <b>Optional:</b> DVI x1, Display Port x1
Connectors & Controls	Audio Mini jack x1 / DC x1; 5 OSD buttons( <b>optional</b> )
Power	Supply / Consumption: 100-240 VAC / 12VDC +/- 5%; 13.8W typical, 1.2W sleep, 0.5W off
<b>Mechanical</b>	Outline Dimensions(WxHxD): 396x324x10.4mm/Weight (Unpacked/Packed): 1.52/N/A kg Box Dimensions: N/A / Mounting: Kits Form

**Environmental** Operating / Storage Temperature: -10°C to 50°C / -20°C to 60°C

**Accessories** LCD controller & constant current boards, power supply, **ambient light sensor** & panel cable

**Others** MTBF / Warranty / Ready for Use: 50,000 hours demonstrated / 1-year / 24/7

\* TDD ([www.tddtouch.com](http://www.tddtouch.com), [sales@tddtouch.com](mailto:sales@tddtouch.com)) reserves the right to change specifications without prior notice.